

**Canon**

 **imageRUNNER**  
ADVANCE

**C7270 / C7260**

**Office  
Solutions**

multifunction printer

high speed, high volume

color/black and white



Simply advanced.

Designed for

**High-volume offices that  
demand brilliant quality and  
outstanding productivity**

Standard Features

Copy/Print/Send/Store

Color/Black and White

Print up to 70 ppm (BW), 60 ppm (Color); Letter

Up to 1200 x 1200 dpi

Up to 13" x 19-1/4"

6,900-sheet maximum capacity

Scan up to 200/140 ipm single-pass duplex

Flexible in-line finishing options

Scan directly to Microsoft® Word, PowerPoint®,  
and Searchable PDF formats

Hard Disk Drive Lock and Erase, IPsec



# Simply advanced.

The imageRUNNER ADVANCE C7200 Series drives high-speed, high-volume performance, greater user satisfaction, and eye-catching quality. Individual processes are seamlessly integrated for greater efficiency and new levels of productivity. From every point of view, these models are simply advanced.



## People-Centric

An exceptionally intuitive, simple-to-use interface puts access to all functions right at your fingertips, whether at the device or at your desktop.



## Brilliant

Get noticed with high-impact color or crisp black-and-white output that's beautiful, professional, and sure to impress.



## Productive

Amazing speed, nonstop operation, and automated features let you accomplish so much more in so little time.



## Mobile

Even on the go, you're in control. Print from a laptop, tablet, or smartphone to an imageRUNNER ADVANCE system.



## Cloud-Enabled

A touch of a button on the user interface lets you access, scan to, or print directly from, certain cloud applications.



## Security

Multilayered solutions help safeguard confidential information and support security compliance, with certain options.



# Easy to use. Easy to customize.

When it comes to meeting your high-volume color needs, the imageRUNNER ADVANCE C7200 Series takes it to a whole new level. This Series is packed with smart, highly customizable features to drive efficiency and productivity.

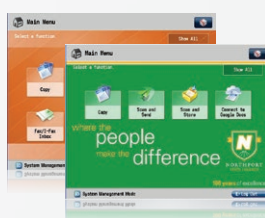
## A smart, intuitive interface

Designed with you in mind, the imageRUNNER ADVANCE C7200 Series models incorporate an impressive range of customizable, simple-to-use, streamlined features. The large 8.4", full-color, high-resolution TFT screen provides exceptional clarity. An optional upright 10.4" screen with a movable arm is also available.



### Two menus

Press the Main Menu key to gain instant access to business-ready functions. Use the Quick Menu to power productivity by combining and accessing routine tasks at the touch of a button.



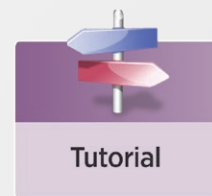
### Custom features

Organize the on-screen buttons to fit the way you work by determining their number, size, and layout. Even display your own logo or special graphic as a screen background.



### Web-ready

View Web pages directly from the device control panel. Just enter a URL to browse pages. Easily output online PDFs.



### Tutorial

### Handy tutorials

Quickly access simple, step-by-step instructions right on the user interface.



## Designed for ease

Thoughtful details, such as a light under the Automatic Document Feeder that alerts users that their originals remain and an optional USB keyboard, allow you to work more comfortably. Toner bottles can be replaced with minimal effort, and paper drawers spring open at the touch of a button.



ADF Light



USB Keyboard



Easy Toner Access



One-button Paper Access

## Engineered for adaptability

These intelligent systems help you achieve your goals now and in the future. With the ability to smoothly integrate hardware and software solutions, the imageRUNNER ADVANCE C7200 Series lets you personalize applications to meet your organization's changing needs. And it's highly flexible, so you can easily add to, or update, your system with the quick deployment of settings across your enterprise.



## Walk-up convenience

Easily scan to, or print from, a USB thumb drive. Browse folders and rename files. Even expand connectivity options to include memory media such as an SD card or CompactFlash card.



## A consistent experience

No matter which imageRUNNER ADVANCE device you use, you'll enjoy a consistent, simple-to-use experience. All models in the Series use the same interface and print driver.



# Streamlined tasks. Powerful integration.

The imageRUNNER ADVANCE C7200 Series will streamline workflow, produce jobs fast, and help users work smarter. Multistep tasks can now be completed in a single step, cloud printing and mobile applications offer the flexibility to work anywhere, and the ability to connect with other devices and solutions enhances functionality.



## On the go

In an increasingly mobile world, people need the ability to work remotely while maintaining their productivity. Now Canon delivers advanced solutions that keep work flowing effortlessly from virtually anywhere.



### Mobile devices

Print from, and scan to, your laptop, iPad® tablet, and iPhone®, or BlackBerry® smartphone. Access an imageRUNNER ADVANCE device to retrieve your job.



### Cloud portal

Gain quick access to certain cloud-based applications right from your imageRUNNER ADVANCE device. Access or send documents directly from the cloud.



### Advanced Anywhere Print

This serverless solution lets you print to a connected imageRUNNER ADVANCE system, then conveniently and securely log-in at any supported device on the network to view and retrieve your print job.

## Extensive Print Solutions

### Print Options

Canon's proprietary UFR II print technology is standard with these models. Options, including Adobe® PostScript® 3™ and PCL 5c/6, are also supported.

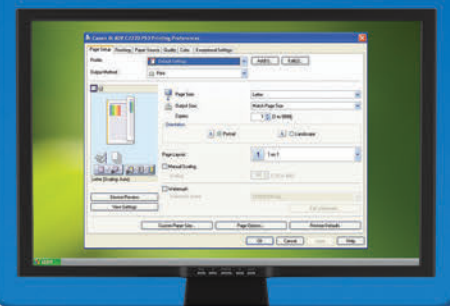
### Job and Color Management Tools

Enhance print productivity for multiuser, color-intensive environments with Canon's imagePASS and ColorPASS print controllers. Produce professional-quality color documents with impressive ease. And the imageRUNNER ADVANCE models support spot color matching with PANTONE® certification,\* helping graphics-intensive environments achieve consistent color management from creation to print.

### Control

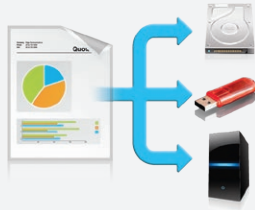
Canon's Driver Configuration Tool allows you to set specific defaults and custom profiles.

You can control costs and enhance security by implementing features such as allowing only black-and-white and/or secured printing.



\* Official certification expected in Q3 2013.

## Easy collaboration



### Scan and store documents

Designed to streamline workflow, these models let you readily save, store, and access scanned documents from multiple locations. Store in built-in spaces such as Mail Box and Advanced Box, or external spaces such as memory media or another networked location.



### Distribute documents

Distribute scanned documents to multiple destinations, such as e-mail and fax addresses and network folders, all in a single step. Now you can scan and convert black-and-white and color documents directly into Microsoft Word, Microsoft PowerPoint, or a Searchable PDF format. Universal Send supports an expanded range of file formats, including High Compression PDF/XPS, Adobe PDF Reader Extensions, and Encrypted PDF.



### Fax documents

These models support up to four fax lines and have the ability to share the fax function of another networked imageRUNNER ADVANCE model. The Job Forwarding feature routes incoming faxes to other systems, users, or destinations, including Canon LBP desktop models, for total fleet integration.



## Single-step operation

Transform time-consuming, multistep tasks into a simple, single-step operation. Use Workflow Composer to create all-in-one buttons that can be registered in the Quick Menu. Scan and distribute documents with the touch of one button.

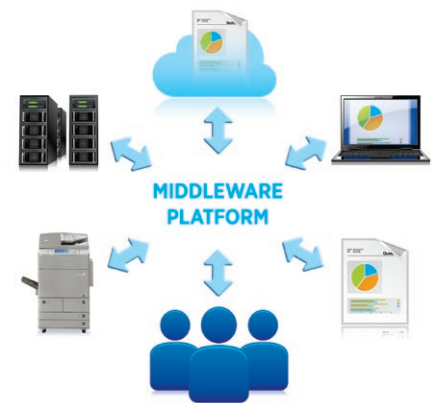


## Right from your PC

Enjoy even greater control and convenience right from your PC. Use the new imageRUNNER ADVANCE Quick Printing Tool to print, fax, preview, and convert files to PDFs, as well as monitor the status of your system—all without even opening an application. imageRUNNER ADVANCE Desktop lets you manage and prepare documents, combine multiple formats, preview files, and select the finishing functions.

## Integrate your imaging with enterprise applications

Canon's middleware technology effortlessly links enterprise applications, such as Oracle® and SAP®, with Customer Relationship Management (CRM) systems like Salesforce.com® and your selected information management system. You can also combine your document-intensive workflow and processes with these applications. The streamlined workflow automates complex business processes and offers easy access to information, saving both time and money.





# Robust security. Centralized management.

In today's networked world, you need greater control over your resources and data. The imageRUNNER ADVANCE C7200 Series delivers just that, with the ability to configure a system, help safeguard information, and track resources, right at your fingertips.



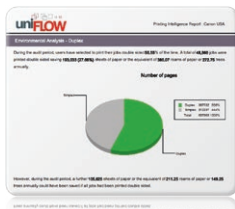
## Powerful command

Canon's device management tools help keep you in charge at every step, right from your desktop or through the cloud. Easily install and replace devices, migrate settings and data to new ones, and distribute applications and settings across your network. Monitor a single device with the Remote User Interface, or an entire fleet with the imageWARE Enterprise Management Console, and even receive alerts when supplies or service are needed.



## Safeguard data

From installation to retirement, this Series offers multilayered solutions to help safeguard information and support security compliance. HDD Erase, a standard feature, removes latent images after each task. A security chip with tamper-resistant hardware helps protect passwords and encryption keys. IPsec provides security for data as it traverses the network. Options such as HDD Data Encryption help protect information even after hard drive removal.



## Maximize resources

These systems offer advanced tools to help you track, manage, and influence user behavior. Solutions, such as uniFLOW, analyze color output, encourage double-sided printing, and allocate costs by department, project, or client. You can also route jobs to the most cost-effective device.



## Secure authentication

With the need to keep data secure, high-volume offices will appreciate the imageRUNNER ADVANCE Series' serverless print environment. Users can print from anywhere within the network to any supported device via log-in authentication. This helps prevent printed documents from being left unattended.

## Security Features

### Document Security

- Document Scan Lock and Tracking
- Adobe® LiveCycle® Rights Management ES2.5 Integration
- Encrypted Secure Print
- Watermark/Secure Watermark
- Copy Set Numbering
- Encrypted PDF
- Digital Signature PDF
- Fax Forwarding
- Fax Destination Confirmation

### Mail Server Security

- POP Authentication before SMTP
- SMTP Authentication

### Network Security

- IP/MAC Address Filtering – Port Filtering
- SSL Encryption
- Network Application On/Off
- USB Port On/Off
- Destination Restriction
- IPsec
- IEEE 802.1x (Wire/Wireless)

### Device Security

- IEEE2600.1 Certification\*

### Data Security

- HDD Lock
- Trusted Platform Module
- HDD Data Erase and Initialize
- HDD Data Erase Scheduler
- HDD Encryption
- Advanced Box Security
- Mail Box Password Protection
- Job Log Conceal
- Removable Hard Disk Drive

### Logging/Auditing Security

- imageWARE Secure Audit Manager Express

### Authentication

- Department ID/Control Card Systems
- Device Level Log-in (SSO-H)
- Access Management System (AMS)
- Function Level Log-in via AMS
- Authorized Send
- Common Access Card (AA-CAC)
- Universal Log-in Manager

Note: Some features may be optional.





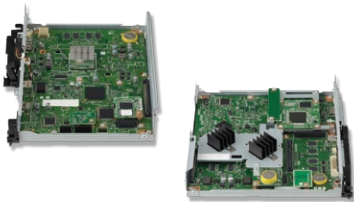
# Professional quality. Dependable performance.

Deliver gorgeous color and crisp black-and-white images at blazing speeds. The imageRUNNER ADVANCE C7200 Series includes powerful features that will help keep your business moving at peak efficiency.



## Stand-out quality

Designed for high-volume environments, the imageRUNNER ADVANCE C7200 Series lets you quickly and cost-effectively produce high-quality presentations, proposals, reports, newsletters, contracts, and more, right in-house. Canon's state-of-the-art imaging technology and toner help ensure that image quality is stunning, whether you select high-impact color or rich black and white. Canon's proprietary ZIMA chip technology ensures delivery of crisp, clear copies. And, a selection of robust and flexible finishing options allow you to create the professional results you need, when you need them.



## Powerful operation

Accomplish multiple tasks concurrently with the exceptional speed your work demands. Canon's Advanced imageCHIP system architecture makes this possible with two dedicated processors that work together to process enormous volumes of data simultaneously. The main board handles image processing, while the accelerator board is dedicated to system control to achieve high-speed networking, UI response time, and connections to peripherals, such as USB memory media and an external keyboard.



## Targeted solutions

With productivity paramount, the imageRUNNER ADVANCE C7200 Series offers the ability to personalize the way your company gathers, organizes, and disseminates information. Canon's innovative MEAP® platform lets you develop custom solutions to meet specific workflow needs. And new levels of connector and link support enhance communication with existing systems as well as those you may acquire in the future.



## Optimized uptime

Canon builds in its signature reliability. The new feeder with improved tray raise-up speed allows jobs to move rapidly through the system. Status notifications keep you informed, and toner can even be replaced on the fly. If the correct paper for a job is unavailable, the system moves quickly on to the next job. With shortened warm-up time and the new Quick Startup mode, devices start promptly. With these features and more, users can count on virtually nonstop operation, giving you more time to devote to your core business functions.



# Strong commitment. Eco-conscious solutions.

The imageRUNNER ADVANCE C7200 Series incorporates innovative, eco-conscious solutions that keep your business operating efficiently while helping to reduce your environmental footprint.



## A responsible way to work

Canon knows that the world and the workplace need a greener workflow, and the imageRUNNER ADVANCE C7200 Series, rated EPEAT Gold, delivers just that. Now you can seamlessly share and distribute digital documents and preview files to make changes prior to printing, helping to reduce the use of paper and toner. Print drivers are defaulted to duplex documents, encouraging two-sided printing to reduce waste. And with Secure Print, documents are sent to a device but not printed until a password is entered, contributing to a reduction in paper waste.



## Eco-conscious design

Canon is making a difference through creative ecological thinking. These models employ certain components fabricated with recycled plastic from retired products. Canon's innovative green technologies also include bio-based plastic, a plant-derived compound that replaces certain petroleum-based plastic parts.

## A clear strategy

### Greater energy efficiency

From the inside out, the Canon imageRUNNER ADVANCE C7200 Series is designed for high energy efficiency and stellar performance. Canon's combination of fusing technologies and pQ toner helps lower overall energy consumption by minimizing power requirements and reducing energy use during warm-up and standby. With advanced technologies present in each model, the Series also meets ENERGY STAR® standards.



### Minimize environmental impact

All suppliers are required to meet Canon's stringent Green Procurement policy and environmental terms. This helps the company exceed the toughest global standards set by the EU RoHS Directive, which restrict the use of certain hazardous substances.



### Reduction of CO<sub>2</sub> emissions

Through its Life Cycle Assessment (LCA) System, Canon has lowered CO<sub>2</sub> emissions by focusing on each stage of the product life cycle, including manufacturing, energy use, and logistics. These products are designed to be the smallest and lightest in their class, with less packaging, to help make transportation more efficient.



# Customized for your work environment

## Finishing Options

### A Booklet Finisher-L1

- 3-tray, 4,000-sheet capacity
- Corner and double stapling up to 50 sheets
- Booklet-making up to 16 sheets

### B External 2/3-Hole Puncher-A1\*

- 2- and 3-hole punching

### C Document Insertion/Folding Unit-G1\*

- Insert preprinted sheets
- Up to 13" x 19"
- 1-tray, 100-sheet capacity
- Z-fold, C-fold

### Staple Finisher-L1



- 3-tray, 4,000-sheet capacity
- Corner and double stapling up to 50 sheets

### Document Insertion Unit-J1\*



- Insert preprinted sheets
- Up to 13" x 19"
- 1-tray, 100-sheet capacity



## Printer Options\*\*

### PCL Printer Kit-AS1

### PS Printer Kit-AS1

### Direct Print Kit (for PDF/XPS)-H1

### imagePASS-A2



- Intel® Pentium® Processor E5300 2.6GHz
- 2GB RAM
- 160GB Hard Disk
- Adobe PS 3/PCL 5c/6

### ColorPASS-GX400



- Intel® Core™ i5 660 3.33GHz Processor
- 2GB RAM standard
- 500GB Hard Disk
- Adobe PS 3/PCL 5c/PCL 6

## Security Options

### Universal Send Security Feature Set-D1

### Universal Send Digital User Signature Kit-C1

### Encrypted Secure Print-D1

### Secure Watermark-B1

### Document Scan Lock Kit-B1

### HDD Data Erase Scheduler

### HDD Data Encryption and Mirroring Kit-C7

### Removable HDD Kit-AH1

## Accessibility Options

### Remote Operator's Software Kit-B1

### Voice Guidance Kit-F2

### Voice Operation Kit-C2

### Braille Label Kit-F1

### ADF Access Handle-A1

\* Requires Staple Finisher-L1 or Booklet Finisher-L1.

\*\* UFR II standard.

**Note:** For additional options and specifications, please refer to the back page.

## Paper Feeding Options

### Paper Deck Unit-C1



- 3,500-sheet capacity
- 14 lb. Bond to 80 lb. Cover
- Supports letter-sized paper
- Thin, Plain, Heavy, Color, Recycled, Pre-Punched

### D POD Deck Lite-A1

- 3,500-sheet capacity
- 14 lb. Bond to 110 lb. Cover
- Supports up to 13" x 19"
- Thin, Plain, Heavy, Color, Recycled, Bond, Pre-Punched, Transparency, Labels, Coated, Textured, Letterhead

## Usability Options



### Upright Control Panel-D1

- 10.4" TFT high-resolution touch-screen
- Tilt-and-swivel capability
- Customizable UI screen

### USB Keyboard

- External keyboard
- Connects via USB interface
- Use with Utility Tray-A2 or with Universal Keyboard Stand-A1

## Main Unit

### Operation Panel:

Standard: 8.4" SVGA Full-Color TFT Screen  
 Optional: 10.4" SVGA Full-Color, TFT Upright Screen

### Memory

Standard: 2GB RAM  
 Maximum: 2.5GB RAM

### Hard Disk Drive

Standard: 160GB  
 Maximum: 1TB

### Network Interface Connection

Standard: 10Base-T/100Base-TX/1000Base-T  
 Optional: Wireless LAN (IEEE 802.1x via third-party adapter)

### Other Interface

Standard: USB 2.0 (Host) x2, USB 2.0 (Device)  
 Optional: Device Port [USB 2.0 (Host) x2], Serial Interface, Copy Control Interface

### Copy/Print Speed (BW/Color; Letter)

**C7270:** Up to 70/60 ppm  
**C7260:** Up to 60/55 ppm

### First-Copy-Out Time (Letter)

BW: 4.9 Seconds  
 Color: 6.6 Seconds

### Paper Sources (20 lb. Bond)

Standard: Dual 1,100-sheet Paper Drawers,  
 Dual 550-sheet Paper Cassettes,  
 100-sheet Stack Bypass  
 Maximum: 6,900 Sheets (w/Paper Deck Unit Option)

### Output Paper Capacity (20 lb. Bond)

4,000 Sheets (w/Staple Finisher or Booklet Finisher)

### Output Paper Sizes

Drawers: Letter  
 Cassettes: 13" x 19", 12-5/8" x 17-11/16", 12" x 18", 11" x 17",  
 Legal, Letter, Letter-R, Executive, Statement-R,  
 Custom Size (5-1/2" x 7-1/8" to 13" x 19-1/4")  
 Bypass: 13" x 19", 12-5/8" x 17-11/16", 12" x 18", 11" x 17",  
 Legal, Letter, Letter-R, Executive, Statement-R,  
 Envelopes, Custom Size (4" x 5-7/8" to  
 13" x 19-1/4")

### Acceptable Paper Weights

Drawers/  
 Cassettes: 14 lb. Bond to 80 lb. Cover (52 to 220g/m<sup>2</sup>)  
 Bypass: 14 lb. Bond to 110 lb. Cover (52 to 300g/m<sup>2</sup>)

### Warm-up Time

From  
 Power On: Approx. 31 Seconds  
 From  
 Sleep Mode: Approx. 30 Seconds  
 Quick Startup  
 Mode: 7 Seconds\*

### Power Requirements/Plug

120V AC, 60Hz, 16A/NEMA 5-20P

### Dimensions (H x W x D)

48-1/8" x 27-1/8" x 36-3/4" (1221mm x 689mm x 932mm)

### Installation Space (W x D)

52-7/8" x 36-3/4" (1344mm x 932mm)

### Weight

Approx. 604 lb. (274kg)\*\*

### Toner (Estimated Yield @ 5% Coverage)

Black: 80,000 Images  
 Color (C,M,Y): 52,000 Images

## Document Feeder

### Scan Method

Single-Pass Duplexing Automatic Document Feeder

### Acceptable Originals

Paper Sizes: 11" x 17", Legal, Letter, Letter-R, Statement,  
 Statement-R

### Scan Speed (BW/Color; Letter)

Simplex: Up to 120/120 ipm (300 dpi)  
 Up to 120/70 ipm (600 dpi)  
 Duplex: Up to 200/140 ipm (300 dpi)  
 Up to 120/70 ipm (600 dpi)

### Paper Capacity (20 lb. Bond)

300 Sheets

## Print Specifications

### Engine Resolution

1200 x 1200 dpi

### PDL Support

Standard: UFR II  
 Optional: PCL 5c/6, Adobe PS 3

### Print Driver Supported OS

UFR II, PCL 5c/6, Adobe PS 3:  
 Windows® (XP/Windows Vista®/7/8), Windows Server (2003/  
 2008/2008 R2/SBS 2011/2012), Windows Terminal Servers  
 (Server 2003/Server 2008/Server 2008 R2/2012), Microsoft®  
 Clustering Server (Server 2003/Server 2003 R2/Server 2008/  
 Server 2008 R2), Citrix (Presentation Server 4.5, Xen App 5.0/  
 6.0/6.5, Xen Desktop 4.0/5.0/5.5/5.6), Macintosh® (OS X 10.5.8  
 or later, UFR II and PS 3 only), VMware, SAP (PS and PCL Only)

### Direct Print Support

Standard: TIFF, JPEG  
 Optional: PDF, EPS,<sup>†</sup> XPS<sup>††</sup>

## Universal Send Specifications

### Sending Method

E-mail, I-Fax, File Server (FTP, SMB, WebDAV), Mail Box,  
 Super G3 Fax (Optional)

### Communication Protocol

File: FTP (TCP/IP), SMB (TCP/IP), WebDAV  
 E-mail/I-Fax: SMTP, POP3, I-Fax (Simple, Full)

### File Format

Standard: TIFF, JPEG, PDF, PDF (Compact), PDF  
 (Searchable), PDF (Apply Policy), PDF (Optimize  
 for Web), PDF/XPS (OCR), PDF/A-1b, XPS, XPS  
 (Compact), OOXML (.pptx and .docx)  
 Optional: PDF (Trace & Smooth), PDF (Encrypted), PDF/XPS  
 (Digital Signature), PDF (Reader Extensions)

## Fax Specifications

### Maximum Number of Connection Lines: 4

### Modem Speed

Super G3: 33.6 Kbps  
 G3: 14.4 Kbps

### Compression Method: MH, MR, MMR, JBIG

### Sending/Recording Size: Statement-R to 11" x 17"

## Store Specifications

### Mail Box (Number supported)

100 User Inboxes, 1 Memory RX Inbox,  
 50 Confidential Fax Inboxes  
 6,000 Maximum Pages Stored

### Advanced Box

Available: Approx. 15GB (Standard HDD)  
 Disk Space: Approx. 629GB (1TB HDD)

### Communication

Protocol: SMB or WebDAV

### Supported

Client PC: Windows (Windows 2000/XP/7/8/Windows Vista)

### Memory Media

Standard: USB Memory  
 Optional: SD, SDHC, CompactFlash, Memory Stick, Microdrive

## Security Specifications

### Standard

Department ID Management, Single Sign-On H, Access  
 Management System (Device and Function Level Log-in),  
 Secure Print, Trusted Platform Module, User Access Control of  
 Advanced Box, Mail Box Password Protection, IPv6, Restricting  
 Features (Restricting the Send Function, Restricting New  
 Addresses on Address Book), SSL Encrypted Communication,  
 SNMPv1/v3, MAC/IP Address Filtering, SMTP Authentication,  
 POP Authentication before SMTP, HDD Erase (Up to 3x), HDD  
 Initialize (Up to 9x), HDD Lock, IPsec, Adobe LiveCycle® Rights  
 Management ES2.5 Integration

\* If "Quick Startup Settings for Main Power" is set to ON, it takes 7 seconds  
 until the key operation on the touch-panel display is available after turning  
 on the main power.

\*\* Including toner bottle and Duplex Color Image Reader.

† EPS can be printed directly only from Remote User Interface.

†† XPS cannot be printed directly from the Web Access software.

NOTE: For detailed specifications and a comprehensive list of optional  
 accessories, see the imageRUNNER ADVANCE C7200 Series Product  
 Specifications document.

As an ENERGY STAR® Partner, Canon U.S.A., Inc. has determined that these products meet the ENERGY STAR guidelines for energy efficiency. ENERGY STAR and the ENERGY STAR mark are registered U.S. marks. CANON, IMAGERUNNER, MEAP, and the GENUINE logo are registered trademarks of Canon Inc. in the United States and may also be registered trademarks or trademarks in other countries. IMAGEWARE is a registered trademark of Canon U.S.A., Inc. in the United States and is a trademark of Canon Inc. in certain other countries. All other referenced product names and marks are trademarks of their respective owners and hereby acknowledged. Specifications and availability are subject to change without notice. Products are not manufactured for outdoor use; depiction of such is for artistic purposes only. Products shown with optional accessories. Additional information on software requirements and compatibility is available at [usa.canon.com](http://usa.canon.com). All printer output images are simulated. Canon U.S.A. does not provide legal counsel or regulatory compliance consultancy, including without limitations, Sarbanes-Oxley, HIPAA, GLBA, Check 21 or the USA Patriot Act. Each customer must have its own qualified counsel determine the advisability of a particular solution as it relates to regulatory and statutory compliance.

©2013 Canon U.S.A., Inc. All rights reserved.

Federal Law prohibits copying of certain documents. Violators may be subject to penalties. We suggest that you check with your own legal counsel. Canon U.S.A., Inc. and Canon Canada, Inc. intend to cooperate with Law Enforcement Agencies in connection with claims of unauthorized copying.



1-800-OK-CANON  
[www.usa.canon.com](http://www.usa.canon.com)

Canon U.S.A., Inc.  
 One Canon Park  
 Melville, NY 11747

