

Canon

The Next Standard of Engineering.

190 D Prints/Hour

Intelligent Media
Handling

Scan-to-Copy/File/
Share Solution Available



imagePROGRAF
TX Series

Setting the Next Standard of Engineering

Canon delivers the imagePROGRAF TX Series of Large-format Printers—the solution to help you capitalize on the emerging market trends and help lead your organization on the path to success.

- 36" imagePROGRAF TX-3100

- 44" imagePROGRAF TX-4100

- 36" imagePROGRAF TX-3100 MFP Z36
Scan-to-Copy/File/Share Solution

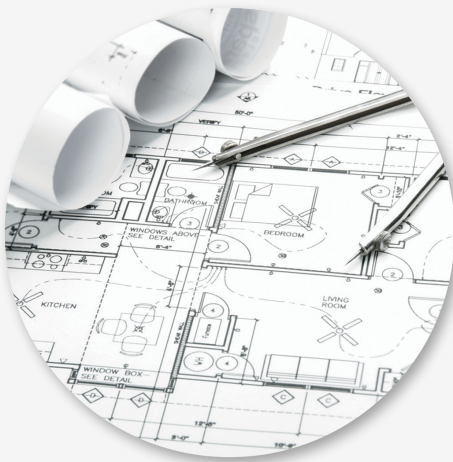
- 44" imagePROGRAF TX-4100 MFP Z36
Scan-to-Copy/File/Share Solution

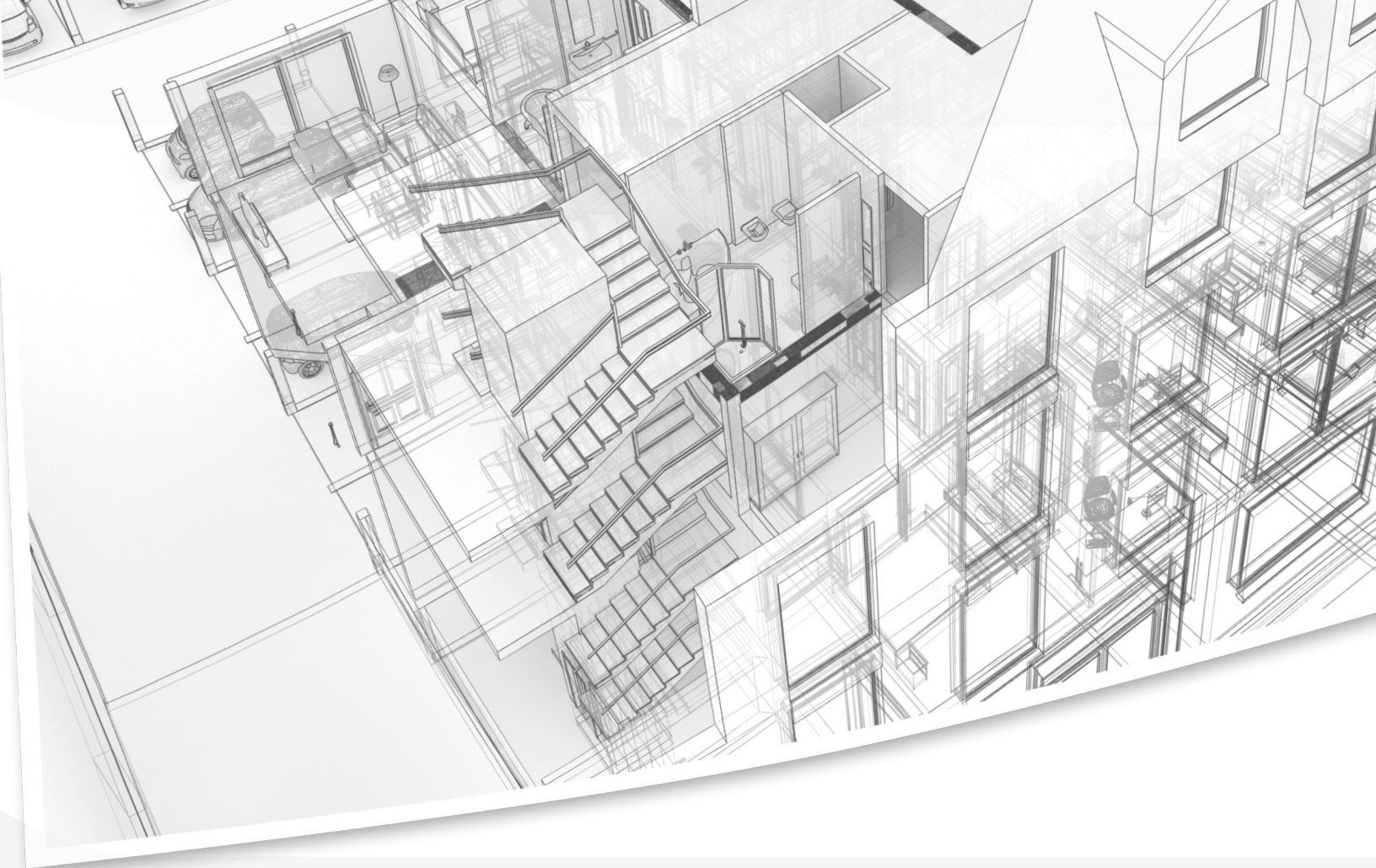


imagePROGRAF TX-4100 MFP Z36
Printer with TX Stacker



imagePROGRAF TX-3100
Printer with Multipositional
Catch Basket





Core Technologies

**#3 IN OVERALL
U.S. PATENTS***

**AMONG TOP 5
IN THE U.S.
PATENTS FOR 31
CONSECUTIVE
YEARS***

Canon continues to innovate and build on its award-winning technology,** year after year. These advances have allowed Canon to design solutions to help improve productivity, maximize use, and enhance security features in a seamless system that can put you at the forefront of the large-format printing industry.

Built for today's culture—where more is asked with less—Canon offers multifaceted advanced solutions for the high-production, technical document inkjet printer market.

* U.S. Patent and Trademark Office, 2020
** BLL, Wide Format Line of the Year, 2020



Print Head



Optional Multifunction Roll



LUCIA TD Pigment Ink



TX Stacker



Security Features



Software Solutions

Advantages Built Right In

The imagePROGRAF TX Series printers offer innovative technologies integrated in their ink system, print head, and mechanical platform. These printers satisfy the needs of the high-volume CAD and low-volume LED plotter markets with print quality, usability, security features, and print speeds up to 190 D-sized prints per hour.♦

LUCIA TD PIGMENT INK

The imagePROGRAF TX Series printers have a 5-color LUCIA TD Pigment ink system. This ink produces fine lines and sharp text, even on non-inkjet coated paper. This ink helps provide a balance between bleed resistance, black density, and water resistance not found in dye ink. Choose from 160 ml, 330 ml, or 700 ml ink tanks.



INTELLIGENT MEDIA HANDLING

The TX Series now has a new Intelligent Media Roll with an advanced sensor technology system. This allows the printer to detect roll width, length and media type, reducing the amount of time it takes to load media into the printer.

SECURITY FEATURES

The imagePROGRAF TX Series Large-format Printers come equipped with security features designed to help protect confidential information. Features include:

- Encrypted Hard Drive
- Enhanced Printer Setting Initialization Function
- Secure Disk Erase (Conforms to U.S. Department of Defense standard DoD5220.22-M)
- IPsec Support
- SSL/TLS
- 802.1x Authentication
- DHCP
- SNMPv3
- Secure Encrypted PIN Printing

SECOND ROLL OPTION

The optional Multifunction Roll System



can be used in two different ways. You can load a second roll of media, which can be of a different type and size, so you can automatically switch

between media types and sizes, without

interrupting your workflow. Or the unit can be operator-configured as a bi-directional Take-up unit. For production printing, two rolls of media up to 650 ft. in length each (6.7" diameter) can be loaded on the printer, giving you the ability to produce over 4,700 sq. ft. of continuous printing on the TX-4100.

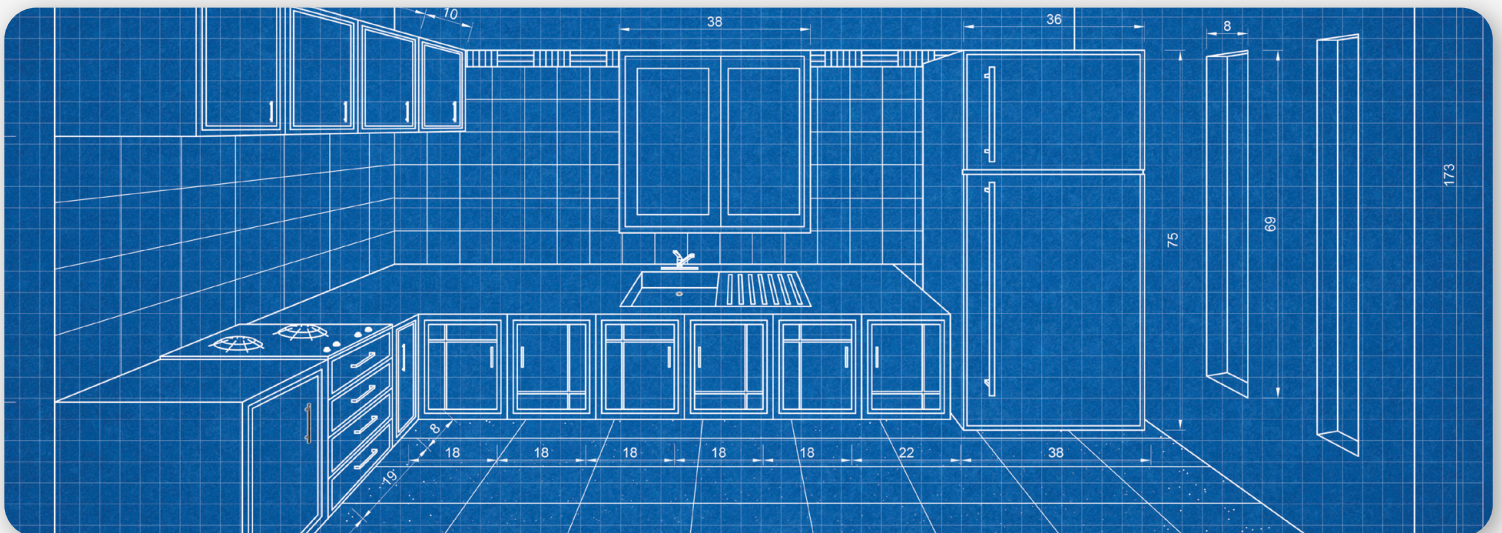
MEDIA OUTPUT

The TX Stacker can stack up to 100 sheets of ARCH C, ARCH D, or ARCH E page sizes for increased productivity. For those who don't require this stacker, the Multipositional Catch Basket is available and offers choices on how prints will be outputted based on the type and quantity being produced.

SUB-INK TANK SYSTEM

As always, the Sub-Ink Tank System is standard with all imagePROGRAF printers for uninterrupted printing. This feature allows for virtually all the available ink in a tank to be used before having to replace it, helping to eliminate any wasted ink.

♦ Plain paper, Fast (Q5) mode.





Printing Solutions

A wide variety of standard software is available to help streamline and optimize workflows in large-format printing environments.

DIRECT PRINT PLUS

This job submission software gives users the ability to upload, download, and print files, including:

- Easily collate sets
- Accurate errors displayed preprint to save ink/media
- Nesting
- Now displays job progress
- Up to 60% faster processing speeds than Direct Print & Share
- Drag-and-drop files to a Hot Folder
- Batch Print Files—PDF, JPEG, TIFF, and HP-GL/2 supported

DIRECT USB PRINTING

Both PDF and JPEG files can be directly printed on the imagePROGRAF TX Series devices. Simply input the thumb drive into the USB port on the printer, preview the image on the operation panel, and print!

CPP PUBLISHER SELECT

Manage printer status, media, and ink availability and receive operator warnings when ink is low or the media roll is empty.

Wi-Fi®

Wi-Fi connectivity* is standard for the imagePROGRAF TX Series printers.

UNIFIED PRINTER DRIVER

A unified Windows driver enables users to print to any imagePROGRAF TX Series device, without the need to install additional drivers for each printer model. This simplifies installation of multiple devices within the same environment.

AutoCAD® OPTIMIZED PRINTER DRIVER

This optimized printer driver helps enable accurate printing of data created with AutoCAD.

ACCOUNTING MANAGER

This helps track actual ink and media usage and costs for up to 50 devices.

PosterArtist Lite

This poster-creation software for PCs makes it easy to create posters, signs, and banners from hundreds of customizable templates and stock images. Users just follow the simple, step-by-step, on-screen instructions—no design experience is required! For more information, visit usa.canon.com/posterartist.

CANON'S PRINT PLUG-IN FOR MICROSOFT® OFFICE

Makes printing enlargements from Microsoft® Excel®, Word, and PowerPoint® as easy as printing to a desktop printer! The on-screen wizard simplifies settings, scaling, and paper size selection.

MEDIA CONFIGURATION TOOL

Register new or custom media types and update the list of Canon GENUINE media.

* Wireless printing requires a working network with wireless 802.11b/g or 802.11n capability. Wireless performance may vary based on terrain and distance between the printer and wireless network clients.

imagePROGRAF TX MFP Z36 Large-Format Printers

Scan-to-Copy/File/Share, the imagePROGRAF TX-3100 MFP Z36 and imagePROGRAF TX-4100 MFP Z36 models are integrated, multifunction, large-format solutions that include a Z36 scanner, all-in-one touchscreen computer, TX Stacker or Catch Basket, and SmartWorks software.

The Canon imagePROGRAF TX MFP Z36 systems are multicomponent, multifunction solutions for architects, engineers, construction, GIS, and other professionals who need to scan, edit, save, share, and print large-format documents easily and efficiently.

ALL-IN-ONE DESIGN

- Scanner attaches to the top of the printer
- Newly developed model is smaller and lighter in weight than previous scanners

SIMULTANEOUS PROCESSING OF SCANNING AND PRINTING

- Scanner and printer work independently allowing for greater productivity



Software and Scanner

SmartWorks MFP scanning software simplifies large-format scanning with intuitive operations on the touchscreen display. Even novice users can easily scan, copy, or edit large-format images.

Z36 SCANNER

The Z36 scanner incorporates a SingleSensor Technology Assembly, which helps provide consistent and better color accuracy with more detail in the shadows and highlights than a staggered CIS array scanner.

Features

- Scanning speed of up to 13 inches per second (monochrome) and up to 6 inches per second (color)
- Scan a document up to 1.0 mm thick
- Face up/front load/rear exit
- Straight paper path

Z36 SCANNER SPECIFICATIONS

Max Scan Speed*

- 24-bit Color @ 200 dpi: 3" (Per Second)
- 8-bit Grayscale and Monochrome @ 200 dpi: 13" (Per Second)

Copy Speed

24-bit color @ 200 dpi: 6" (Per Second)

Scan Modes

- 16.7-million Color RGB (24-bit)
- 256-level Grayscale (8-bit)
- Black and White (1-bit)

Color Space

sRGB

Maximum Resolution

1200 dpi (Optical)

Scan Accuracy**

+/- 0.1%; +/- 1 Pixel

Maximum Image Width

36"

Maximum Media Width

38"

Maximum Scan Length

315" (JPEG/PDF); 598" (TIFF)

Maximum Media Thickness

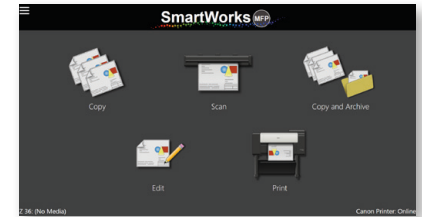
0.003" – 0.04" (0.07 mm – 1.0 mm)

Media Feed System

Adaptive CIS media focus management and media guide mechanism; intuitive face-up, front-loading, and front/rear-exit media path; automatic media size detection with optical media sensors

SmartWorks SOFTWARE

Enhancements have been made to the SmartWorks Software included with both the TX-3100 MFP Z36 and TX-4100 MFP Z36 printers.



SmartWorks offers:

- An easy-to-use interface with customizable background and presets
- Scan-to-Multipage PDF as a standard feature!
- Real-time preview on the large 15.6" touchscreen

Digital Imaging Technology

Contact Image Sensor (CIS) Technology (SingleSensor Assembly)

- 24-bit RGB digital color image capture
- 16-bit grayscale image capture
- Panchromatic monochrome and black and white
- Bi-directional extra long-life LED light system for optimum object illumination and instant-on scanning capability

Digital Image Processing

- 2D Intelligent Adaptive Thresholding (IAT) (1-bit mode)
- Fixed Threshold Black and White (1-bit mode)
- Dynamic Normalization Application (DNA) with 16-bit Super Sampling

User Status and One-Touch Operation

Right-side mounted control panel; walk-up operation and user selection of stop, forward and rewind, scan, copy, or copy and archive

Included Software

- SmartWorks MFP Scan-to-Copy/File/Email with Real-time Image Viewer. Supports TIFF, JPEG, TIFF G4, and PDF

Operating System

Windows 10 LTSC

User Maintenance

Installable Plug-and-Play Scanner; Simple Cleaning

Scanner Interface Kit

Superspeed USB 3.0 (PC Connector Compatible with USB 2.0 and USB 3.0 Sockets)

Operating Environments

10 – 35° C, 10 – 90% RH, Non-condensing

External Power Supply

100 – 240 VAC Autosensing +/- 10%, 50 – 60Hz

Scanner Power Consumption

- Sleep: 0.2W, Idle: 12.4W
- Scanning color/grayscale at 200 dpi: 22.7W/23.3W

Compliances

ENERGY STAR®, CB (62368-1), CE, FCC (EMC), CuI/UL, CCC, NOM-019, EAC, C-TICK, VCCI, BIS, EMC +LOA, UL AR, WEEE, REACH, RoHS, EU—Tier 3 of Lot6

Scanner Dimensions

Height: 7"
Width: 42"
Depth: 10"

Scanner Weight

17 lb., 3 oz.; (Approx.)

Scanner Package Dimensions (H x W x D) and Weight

15" x 45" x 17"; 46 lb. (Approx.)

What's In The Box?

- Z36 Scanner with Power Cord, USB 3.0 Cable (2 meter)
- 15.6" System Controller
- 3:1 Trident Power Cord
- Power Supply
- Mount for Printer and System Controller
- 2 Paper Edge Guides
- Document Return Guides
- Calibration Target
- Assembly and Startup Guide

* The scan rate is proportional across the full range of resolutions supported by the scanner. Actual scan times will depend on the host system performance. Quoted top speeds may be limited by the effective bandwidth of the USB 2 and is not guaranteed for all media types.

** The quoted scan accuracy may vary depending on the operating environment and the thickness of the media.

Note: The imagePROGRAF TX Series MFP Z36 systems contain multiple components, some of which are manufactured by third parties. To the extent that such third-party offerings come with limited warranties, those such limited warranties are hereby passed to the purchaser, and Canon shall have no obligation or any liability with respect to such third-party offerings.

PRINTER SPECIFICATIONS

Print Head

PF-06

Technology

FINE (Photolithography Inkjet Nozzle Engineering)

Print Resolution (Max.)

2400 x 1200 dpi

Line Accuracy*

±0.1% or Less

Minimum Line Weight**

0.02 mm

Number of Nozzles

Matte Black: 5,120 Nozzles

Other Colors: 2,560 Nozzles per Color

Droplet Size

5 Picoliter

Nozzle Pitch (Head Resolution)

1200 dpi x Two Rows

Print Head Swath

1.07 inch

Ink Type

Pigment: Matte Black (MBK), Cyan (C), Magenta (M), Yellow (Y), Black (BK)

Ink Tank

Shipped with Printer:

TX-3100 (160 ml each color, 330 ml MBK)

TX-4100 (330 ml each color)

Replacement: PFI-110 (160 ml), PFI-310 (330 ml), or PFI-710 (700 ml)

Ink Supply Method

Tubing System with Sub-tanks for Continuous Ink Supply

Nozzle Recovery System

Non-firing Nozzle Detection and Compensation

Printer Controller

L-COA PRO

Printer RAM

128 GB (Virtual), 2 GB (Physical)

Hard Drive

500 GB

Mailboxes (User Job Storage)

One Common Inbox; 29 User Inboxes (Password-protected)

Media Feed

Roll Feed: One Roll, Front-loading, Front Output

Media Width

TX-3100

Roll Feed: 6"-36" (152 mm - 914 mm)

Cut Sheet: 6"-36" (152 mm - 914 mm)

TX-4100

Roll Feed: 6"-44" (152 mm - 1118 mm)

Cut Sheet: 6"-44" (152 mm - 1118 mm)

Printable Margins

Roll Feed: All Sides: 0.12" (3 mm) or 0" for Borderless

Maximum Print Length (Single Page)†

Roll Feed: 59' (18 m)

Cut Sheet: 63" (1.6 m)

Borderless Printing Widths (Roll Media Only)

TX-3100

Custom Roll Width 6" - 36" with micro margin technology

TX-4100

Custom Roll Width 6" - 44" with micro margin technology

Media Cutter

Durable Dual-Blade Rotary Cutter

Media Thickness

0.07 mm - 0.8 mm

Media Core Sizes

2" and 3" Core (Adapter Included)

Maximum Roll Outer Diameter

6.7" (170 mm)

Media Output Options

TX Stacker

Multipositional Catch Basket

Printing Software Utilities

Accounting Manager, Canon Print Service, Canon Production Printing (CPP) Driver Select, Canon Production Printing (CPP) Publisher Select, Device Management Console, Direct Print Plus, Free Layout Plus, imagePROGRAF Printer Driver for Windows®/Mac®, Media Configuration Tool, PosterArtist Lite for Windows, Optimized Driver for AutoCAD®, Quick Utility Toolbox

Operating System

Windows® 7 (32/64-bit), Windows 8.1 (32/64-bit), Windows 10 (32/64-bit), Windows Server 2008 R2, (32/64-bit), Windows Server 2012 (64-bit), Windows Server 2012 R2 (64-bit), Windows Server 2016 (64-bit), Macintosh OS 10.12.6 and later

Print Language

Printer: SGRaster, HP-GL/2, HP RTL, PDF, JPEG

Interface

Standard (Built-in): USB 2.0 Hi-Speed, 10/100/1000Base-T/TX, Wireless LAN (IEEE 802.11 b/g/n)‡

Direct USB Thumb Drive Printing

Acoustic Noise

Operation: 51 dB (A) or Less

Standby: 35 dB (A) or Less

Acoustic Power: 6.9Bels or Less

Power Supply

AC 100 - 240V (50 - 60 Hz)

Power Consumption

Maximum: **TX-3100:** 115 W or Less

TX-4100: 116W or Less

Standby: 2.0 W or Less

Power Off: 0.3 W or Less (Executive Order Compliant)

Certifications

Electrical Safety Regulations

C TU Vus (U.S.A.), C TU Vus (Canada)

Electromagnetic Interface Regulations

FCC Part 15B (U.S.A.), IC (Canada)

Radio Regulations

FCC Part 15C (U.S.A.), IC (Canada)

Environmental Certifications

ENERGY STAR® (Worldwide)

imagePROGRAF

TX Series

Operational Environment

Temperature: 59° F - 86° F (15° C - 30° C)

Relative Humidity: 10 - 80% (No Condensation)

Printer Dimensions (H x W x D) and Weight with Stand and Stacker (With Stacker Open)

TX-3100: 46" x 55" x 47"; 257 lb. (Approx.)

TX-4100: 46" x 63" x 47"; 278 lb. (Approx.)

With Catch Basket Open

TX-3100: 46" x 55" x 39"; 231 lb. (Approx.)

TX-4100: 46" x 63" x 39"; 252 lb. (Approx.)

Package Dimensions (H x W x D) and Weight (With Stand and Pallet)

TX-3100

42" x 64" x 36"; 328 lb. (Approx.)

Stacker

12" x 50" x 36"; 52 lb. (Approx.)

Catch Basket

8" x 56" x 22"; 18 lb. (Approx.)

TX-4100

42" x 72" x 37"; 355 lb. (Approx.)

Stacker

12" x 58" x 36"; 55 lb. (Approx.)

Catch Basket

8" x 56" x 22"; 18 lb. (Approx.)

Options

• Multifunction Roll System

(**TX-3100:** RU-32, **TX-4100:** RU-42)

• 2"/3" Roll Holder Set

(**TX-3100:** RH-24, **TX-4100:** RH-24-46)

• PosterArtist

User-Replaceable Items

• Ink Tank (PFI-110/PFI-310/PFI-710)

• Print Head (PF-06)

• Maintenance Cartridge (MC-30)

• Cutter Blade (CT-07)

What's In The Box

Printer, TX Stacker or Multipositional Catch Basket, Stand, 2"/3" Core Media Spool (Adapters Included), Power Cord, Tools and Screws, Print Head, Maintenance Cartridge (Installed), 5 Ink Tanks (MBK/C/M/Y/BK), Ethernet Card (built-in), USB 2.0 High-speed Interface, USB Connection Sheet, iWR Service Terms Leaflet, User Manual, Quick Setup Guide, User Software CD for Windows (Printer Driver Utilities), PosterArtist Lite CD, User Registration Card, Warranty Statement

* Line accuracy repeatability is guaranteed after a user performs necessary adjustment and under the same environmental conditions. Applies to media for line drawing (Plain Paper, Coated Paper, CAD Translucent Matte Film, and CAD Tracing Paper) only.

** Theoretical value based on data resolution.

† The maximum printable length varies, depending on the application, OS, and RIP used.

‡ Wireless printing requires a working network with wireless 802.11b/g or 802.11n capability. Wireless performance may vary based on terrain and distance between the printer and wireless network clients.

usa.canon.com/imagePROGRAF



As an ENERGY STAR® Partner, Canon U.S.A., Inc. has qualified these models as meeting the ENERGY STAR energy efficiency criteria through an EPA recognized certification body. ENERGY STAR and the ENERGY STAR mark are registered trademarks owned by the U.S. Environmental Protection Agency. Canon and imagePROGRAF are registered trademarks of Canon Inc. in the United States and may also be registered trademarks or trademarks in other countries. Microsoft, Office, Windows, Outlook, Word, Excel, and PowerPoint are either registered trademarks or trademarks of Microsoft Corporation in the United States and/or other countries. Wi-Fi is a registered trademark of the Wi-Fi Alliance. Autodesk, the Autodesk logo, and AutoCAD are registered trademarks or trademarks of Autodesk, Inc. and/or its subsidiaries and/or affiliates in the U.S.A. and/or other countries. All other referenced product names and marks are trademarks of their respective owners. Certain printer output and screen images are simulated. Canon products offer certain security features, yet many variables can impact the security of your devices and data. Canon does not warrant that use of its features will prevent security issues. Nothing herein should be construed as legal or regulatory advice concerning applicable laws; customers must have their own qualified counsel determine the feasibility of a solution as it relates to regulatory and statutory compliance. Some security features may impact functionality/performance; you may want to test these settings in your environment. Subscription to a third-party cloud service is required for certain features. Subject to third-party cloud service provider's Terms and Conditions. Specifications and availability subject to change without notice. Not responsible for typographical errors.

©2021 Canon U.S.A., Inc. All rights reserved.
0321RI-TXBro-PDF-IH

Canon

